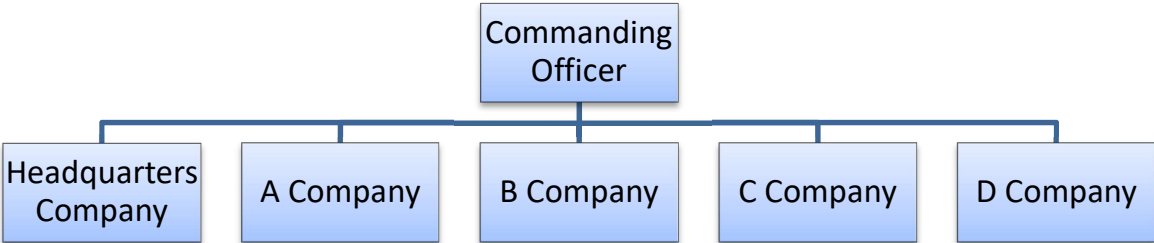


Organization Chart of the 60th Battalion

The basic formation of the Battalion was four Infantry Companies and a Headquarters Company

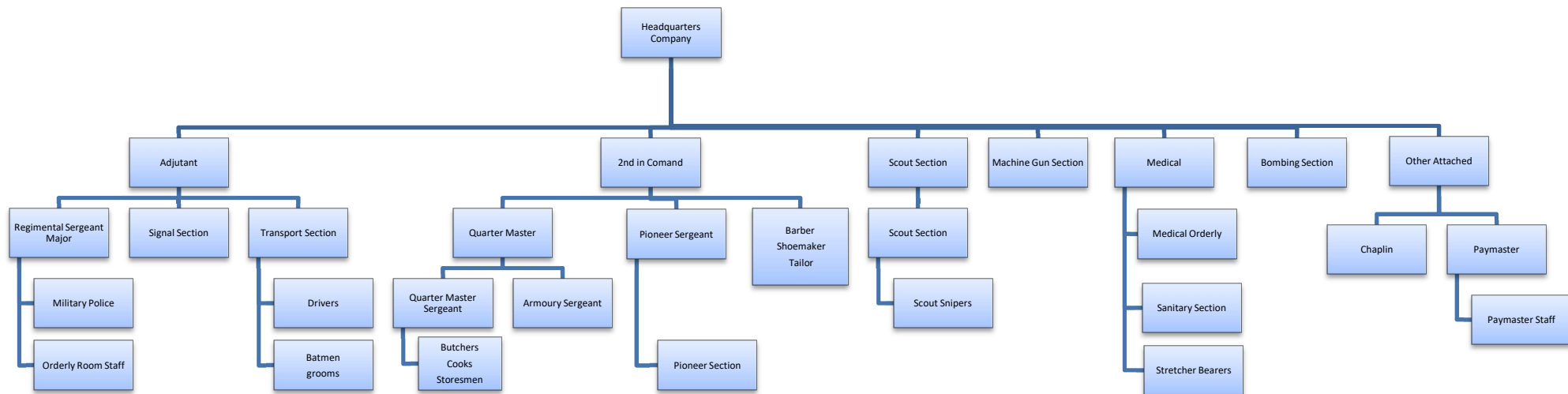
The Headquarters Company was the administrative branch while the Infantry Companies formed the sharp end



Organization Chart of the 60th Battalion

The Headquarters Company

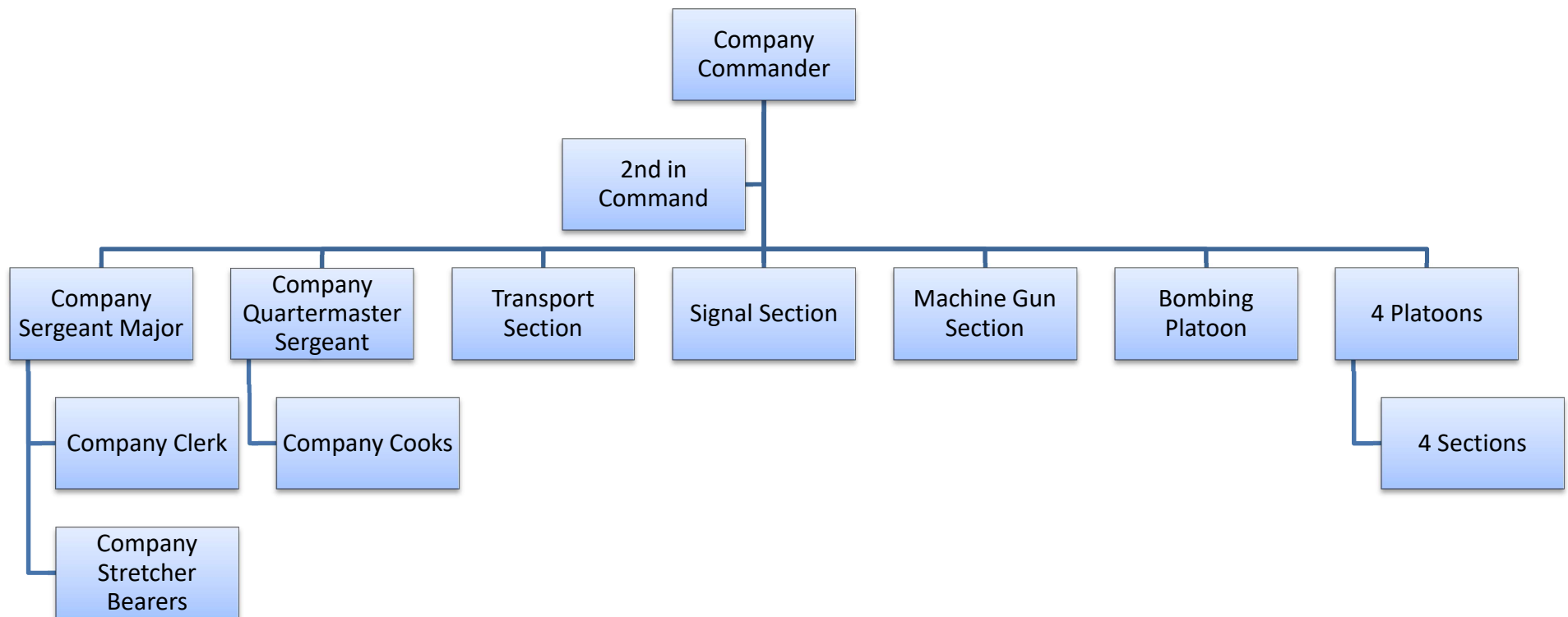
The Headquarters Company was the administrative branch, keeping records, making sure supplies were on hand, providing services such as shoemaking and rifle repair. The Headquarters Company also provided battalion wide combat support with Machine Guns and Bombers. Regimental Aid Posts were set up by the Headquarters Company to serve the entire battalion.



Organization Chart of the 60th Battalion

The Infantry Company

The Infantry Company was the front line of the battalion. It had a small Administrative section and Transport, Signal, Machine Gun and Bombing Sections that could be directed to the platoons at the front in the most need. The company had four Platoons of Infantry made up of four Sections of twelve men.



Organization Chart of the 60th Battalion

The Infantry Platoon

The Infantry platoon was the heart of the Company. There are 4 Platoons to a Company, sequentially numbered. A Company had Platoons 1 through 4, B had 5 through 7, C had 8 to 12 and D Company had numbers 13 through 16. The Platoon was commanded by a Lieutenant with the sections commanded by a Sergeant or Corporal. Each section had twelve men, approximately fifty men made up a platoon. As the war progressed Platoons were reorganized to include Lewis Gunners, Bombers and Riflemen to each section, giving the sections much greater independence and fighting power.

